

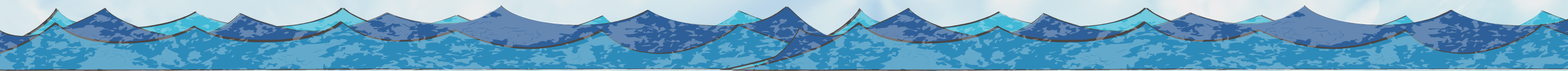
Unit 1: The Physical Characteristics of The Arab World.

Topic: Seas of the Arab World

GRADE 6

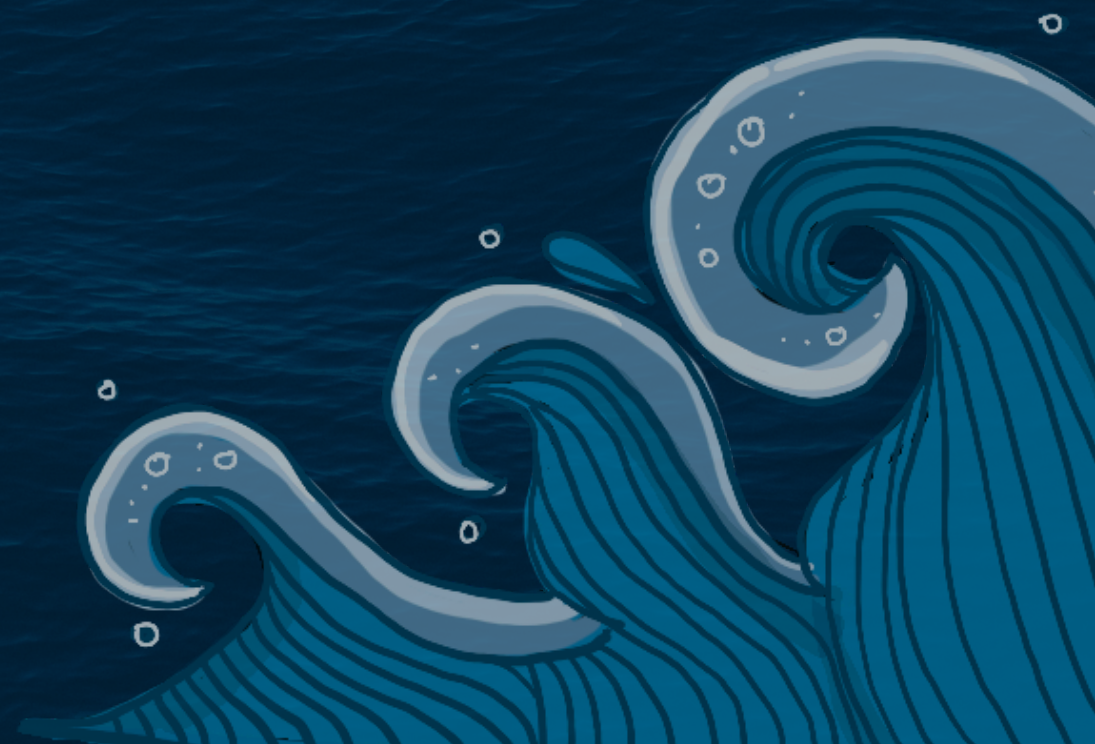


DO NOW
What is 1
Sea in the
Arab
World?



What is a Sea?

A sea is the expanse of salt water that covers most of the earth's surface and surrounds its land masses.



Sea of the Arab World

1.
Arabian Sea

2.
Red sea

3.
**Mediterranean
Sea**

4.
Dead Sea

Map of the Sea's



The Arabian Sea



- Located in the northwestern part of the Indian Ocean.
- Covers a total area of approximately 1,491,000 square miles (3,862,000 square kilometers).
- Forms part of the principal sea route between Europe and India.

Geographical Boundaries

- West: Bounded by the Horn of Africa and the Arabian Peninsula.
- North: Bounded by Iran and Pakistan.
- East: Bounded by India.
- South: Bounded by the remainder of the Indian Ocean.

Countries with Coastlines on the Arabian Sea

- Yemen, Oman, Pakistan, Iran, India and Maldives

The Mediterranean Sea



- An intercontinental sea stretching from the Atlantic Ocean the west to Asia the east.
- Acts as a natural boundary separating Europe from Africa.

Connected to:

- The Black Sea via the Bosphorus Strait, Sea of Marmara, and Dardanelles.
- The Red Sea via the Suez Canal in Egypt.

Countries with Coastlines on the Mediterranean Sea

- Algeria, Egypt, Lebanon, Libya and Tunisia

The Red Sea



A long narrow sea between Arabia and north east Africa, linked with the Mediterranean in the north by the Suez Canal and with the Indian Ocean in the south.

Bordering Countries

- Eastern Shore:
 - Saudi Arabia and Yemen
- Western Shore:
 - Egypt, Sudan and Djibouti

The Dead Sea

The Dead Sea has the lowest elevation and is the lowest body of water on the surface of Earth.

Jordan is the only Arab country that share the Dead Sea coastline.

